



## Appenzell Card.

### Our free gift to you!

If you stay three nights or more at the same accommodation in Appenzell and surrounding area, you can look forward to a special gift. The Appenzell Card (Appenzeller Ferienkarte) is our way of making you welcome. You'll receive this free gift on arrival at most hotels, mountain guest houses, holiday apartments and bed and breakfast accommodations. Ask about the Appenzell Card when you make your reservation and enjoy the Appenzell area to the full! Uncomplicated, generous, natural, surprising, authentic and hospitable – that's Appenzell.

The Gold Card for our hotel guests



The Silver Card for our holiday apartment guests

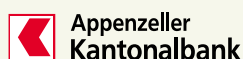


### Information about the Appenzell Card

Adults and children aged 6 and over who spend three nights or more in a hotel, mountain guest house, holiday apartment or bed and breakfast will receive the Appenzell Card free of charge from many establishments. Hotel guests receive all the benefits listed on pages below. Holiday apartment guests receive the same benefits apart from public transport. Ask about the Appenzell Card (Appenzeller Ferienkarte) when you make your reservation.

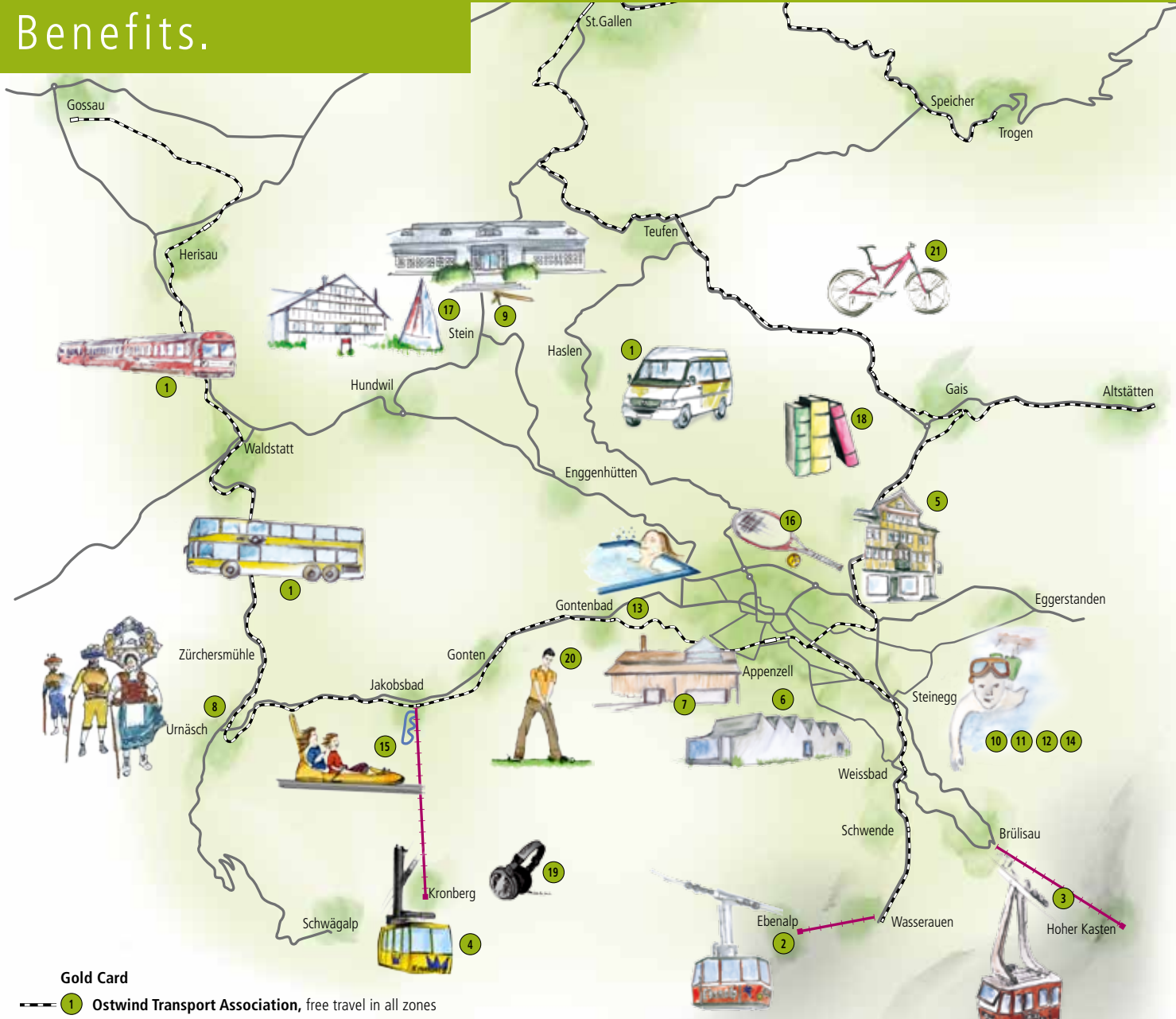
- The card must be shown at the counter or to the attendant before use.
- In trains and Postauto buses the Card must be presented together with some form of official photo ID (e.g. passport, driver's licence etc.).
- The holder shall not be entitled to any reimbursements for previously used travel tickets or for non-use of cable cars as a result of operational shutdowns.
- The card is only valid for the holder's personal use in conjunction with some form of official photo ID (e.g. passport, driver's licence etc.).
- The Appenzell Card is valid for hotel guests for max. 7 days and for holiday apartment guests for max. 8 days.
- Hotel guests staying more than 7 days will receive a new Appenzell Card free of charge from their hotel.
- In the case of holiday apartment guests staying longer than 8 days, the Card can be extended to 14 days by the apartment operator who must mark the Appenzell Card with a special sticker.
- Your host is not allowed to add a charge for the Appenzell Card to your bill. It is included in the cost of the accommodation.
- Tennis court use is for 1 person, not 1 court. Playing partners must also present their Appenzell Card or pay their own share of the court fees (excludes racket hire).
- The bobsled run is valid for 1 sled.
- If you leave early (fewer than 3 nights), the owner of your accommodation has the right to charge the full price per night of at least CHF 20.00 per night per card.
- The Appenzell Card cannot be used for transporting skiers.
- The card cannot be purchased.
- Although the PubliCar is part of the OSTWIND Transport Association, a supplement of CHF 5.00 per person is payable for all travel.
- The number of available bicycles is limited and therefore holders of the Appenzell Card cannot be guaranteed access to a rental cycle. It is therefore advisable to reserve cycles in advance. Please note the opening times of cycle shops.
- Not all Appenzell Card benefits are always available. The lack of availability shall not give rise to any entitlement to compensation.
- The rental cycles can be transported on public transport at the normal terms and conditions (i.e. not free of charge).
- The Silver Appenzell Card is not valid for public transport.

### Sponsors



Appenzellerland Tourist Office AI   
 CH-9050 Appenzell  
 Tel. +41 (0)71 788 96 41  
 Fax +41 (0)71 788 96 49  
 info@appenzell.ch

# Benefits.



## Gold Card

-  1 **Ostwind Transport Association**, free travel in all zones  
**PubliCar**, free journey (basic tariff CHF 5.00)
-  2 **Wasserrauen–Ebenalp cable car**, 2 trips
-  3 **Hoher Kasten revolving restaurant and cable car**, 2 trips
-  4 **Jakobsbad–Kronberg cable car**, 2 trips
- 5 **Museum Appenzell**, free admission
- 6 **Museum Liner**, free admission
- 7 **Museum Ziegelhütte**, free admission
- 8 **Brauchtummuseum Urnäsch (Museum of Appenzell Customs)**, free admission
- 9 **Volkskundemuseum Stein (Stein Folk Museum)**, free admission
- 10 **Appenzell indoor swimming pool**, free admission
- 11 **Appenzell Wellness Centre**, 1 admission
- 12 **Kaubad indoor swimming pool**, free admission
- 13 **Natur-Moorbad Gontenbad (health spa)**, 1 admission
- 14 **Appenzeller Badi outdoor pool**, free admission
- 15 **Jakobsbad toboggan run**, 1 trip
- 16 **Appenzell Tennis Hall**, one-time use
- 17 **Stein demonstration cheese dairy**, one cheese-tasting session
- 18 **Volksbibliothek (library)**, free book loan (deposit required)
- 19 **Audio walk**, one-time use
- 20 **Gonten Golf Club**, 30 free balls on driving range for each green fee
- 21 **Cycle hire**, one-time free cycle hire (electric bike, MTB or City bike)

## Silver Card

All benefits (apart from 1 OSTWIND Transport Association) also apply for the holiday apartment Silver Card.

